



Instructions for packing Information on the storage system

Pallets must meet the following requirements:

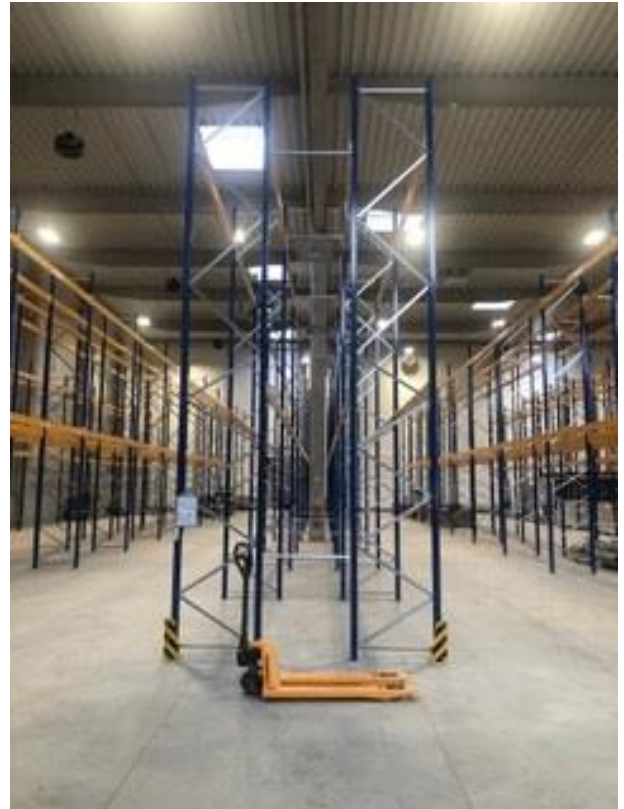
- high quality and undamaged, with a load capacity of at least 1200 kg
- dimensions 100 x 100 cm, minimum height for pallet truck forks 9 cm
- unloading from the back of the truck (cannot be unloaded from the side, forklift is not available)
- required type of pallet:





Shelving storage system

- 3 pallet places next to each other - a bag with a maximum weight of 1050 kg and a maximum height including a pallet of 260 cm must be placed in the middle of a pallet measuring 100 x 100 cm, must not exceed the edges of the pallet by more than 5 cm and must not be inclined to fill all pallet places
- 3 pallet places on top of each other - the pallet must be of the required type, of good quality and undamaged, with a load capacity of at least 1200 kg, so that it can be safely lifted to a height of up to 7 m



Big bags must meet the following requirements:

- maximum weight 1050 kg
- maximum height of the big bag including the pallet 2600 mm
- 4 upper handles
- bag walls reinforced with stitching

